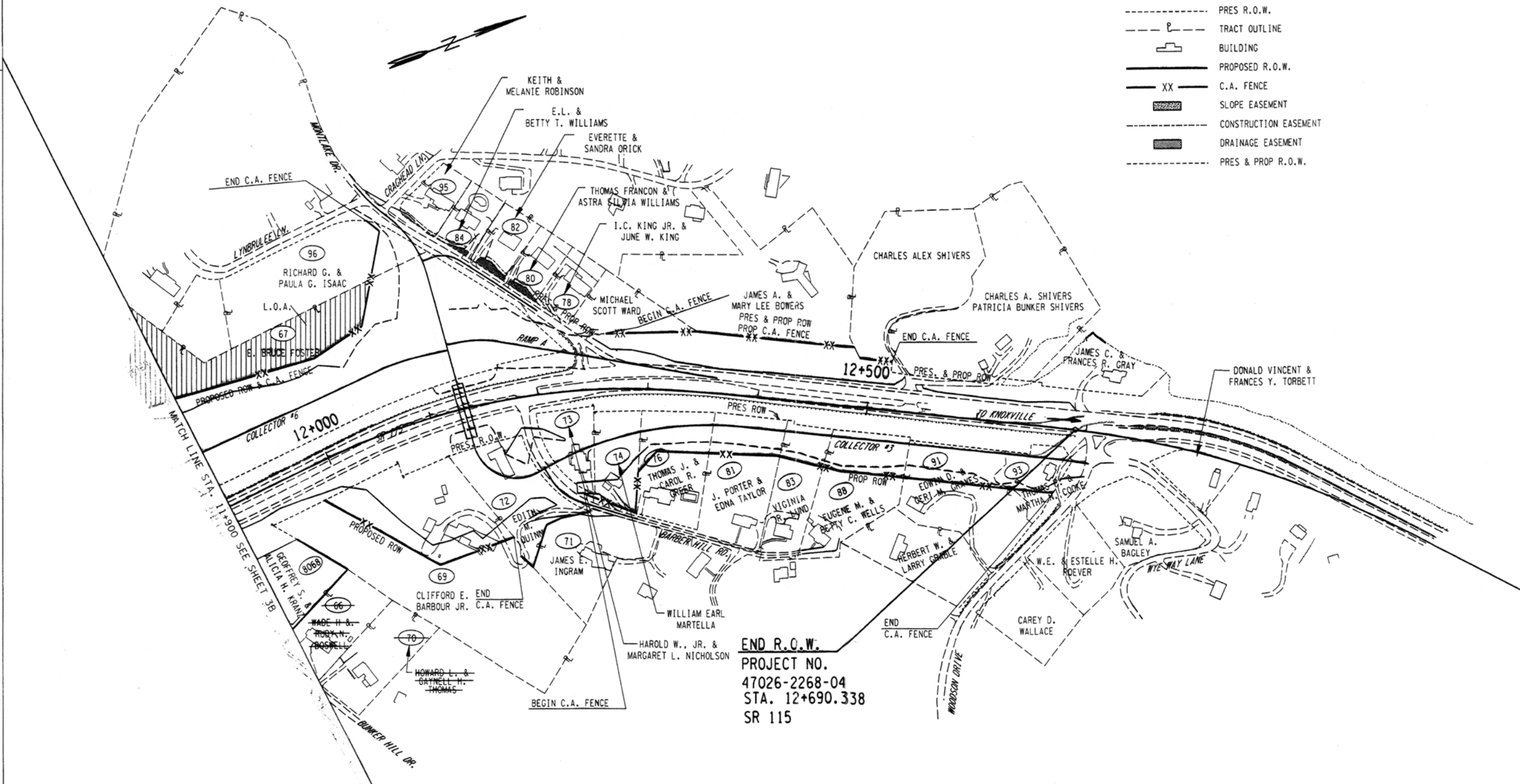


| TYPE | YEAR | PROJECT NO. | SHEET NO. |
|------|------|---------------|-----------|
| ROW | 2000 | 47026-2268-04 | 3D |
| | | | |
| | | | |

REV. 04-13-2001: REVISED SLOPE LIMITS ON COLLECTOR #3 MONTLAKE DR., BARBER HILL & MONTLAKE COURT.
REV 05-15-2001: ADDED TRACTS 66 & 70 REVISED PROP. R.O.W. & SLOPE LIMITS.
REV. 28-FEB-2003: ADDED LEGEND, REVISED ALIGNMENT FOR SR115, COLLECTOR NO.6, NO.3, GREENWAY & BUNKER HILL RD, UPDATED R.O.W. MOVED SR115 TO WEST & ADD HORIZONTAL CURVE TO PROVIDE TIE-IN ON NORTH END OF PROJECT. IDENTIFIED LOSS OF ACCESS TRACT 67. LINED OUT TRACTS 64, 66 & 70. ADDED TRACT 71. RENAMED TRACT 68 TO 8068

- LEGEND**
- (30) TRACT NUMBER
 - - - - - PRES R.O.W.
 - - - - - TRACT OUTLINE
 - ▭ BUILDING
 - PROPOSED R.O.W.
 - XX C.A. FENCE
 - ▨ SLOPE EASEMENT
 - - - - - CONSTRUCTION EASEMENT
 - ▨ DRAINAGE EASEMENT
 - - - - - PRES & PROP R.O.W.



END R.O.W.
PROJECT NO.
47026-2268-04
STA. 12+690.338
SR 115

*****SYTIME*****
*****DCNSPEC*****



COORDINATE VALUES ARE NAD/83 (1995) AND ARE DATUM ADJUSTED BY THE FACTOR OF 1.00009166 & TIED TO THE T.G.R.N.

STATE OF TENNESSEE
DEPARTMENT OF TRANSPORTATION

PROPERTY MAP
STA. 11+900 - STA. 12+687.506
SCALE: 1:2000